



BROAD COVE NATURE TRAIL

(WEST ENTRANCE)

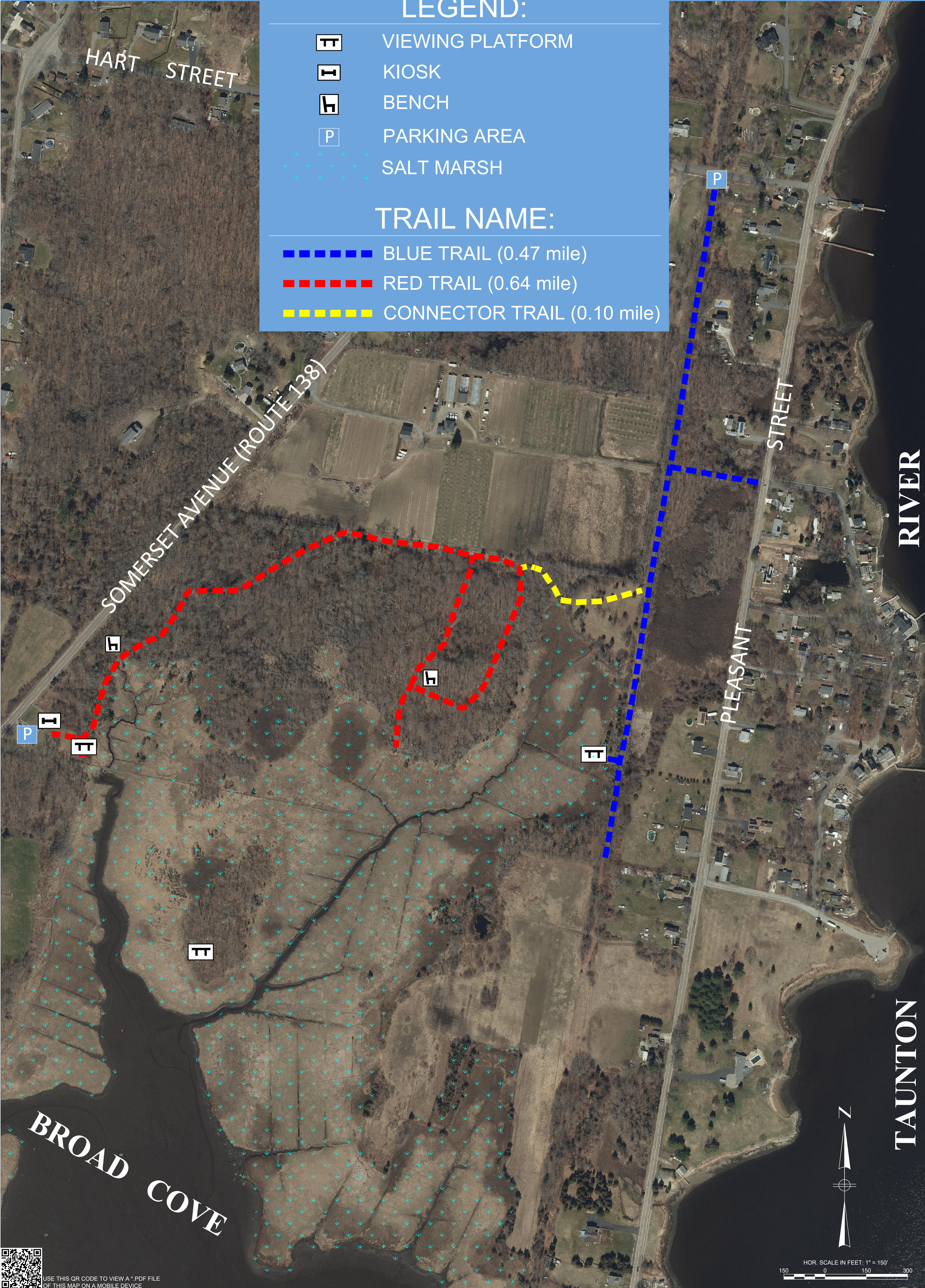


LEGEND:

- VIEWING PLATFORM
- KIOSK
- BENCH
- PARKING AREA
- SALT MARSH

TRAIL NAME:

- BLUE TRAIL (0.47 mile)
- RED TRAIL (0.64 mile)
- CONNECTOR TRAIL (0.10 mile)



USE THIS QR CODE TO VIEW A * PDF FILE
OF THIS MAP ON A MOBILE DEVICE



HOR. SCALE IN FEET: 1" = 150'
0 150 300